

## Access Dial Face and Arm on Norton 961 Speedometer

1. Remove the speedo as per Richard's manual.
2. To remove the Bessel locate the small indents in the black base where the silver line up tabs are located (There are 4). Using only your fingers, lift Bessel away from notch just enough to have the silver tab away from the black base (Figure 1). Now do the same with the next silver tab (Figure 2) and the Bessel will be free.



Figure 1.



Figure 2.

3. Now to remove the clear lense. I first heated the outside edge where it is glued, I don't know if this helped. I did not over heat it as to damage it. I used a long x acto blade. To get it started I put the tip of the blade at one of the notches in the black base and was able to get the edge of the blade between the black base and the clear lense. **VERY IMPORTANT** do not move the knife side to side as I am sure you will brake either the base or the lense. Rather use a rocking motion forward to back this will cause the blade to separate the base from the lense. As you can see in (Figure 3) the glue in front of the knife is separating and the dark black glued area is turning clear. This is a slow process you must take your time.



Figure 3.

4. The Speedo arm is friction fit only when installing the arm, just align with zero and gentle pressure to the center of the base over the pin and it is on. As you can see in (Figure 4) the center of the Speedo arm is a small clear tube. (Figure 5) shows the center pin.

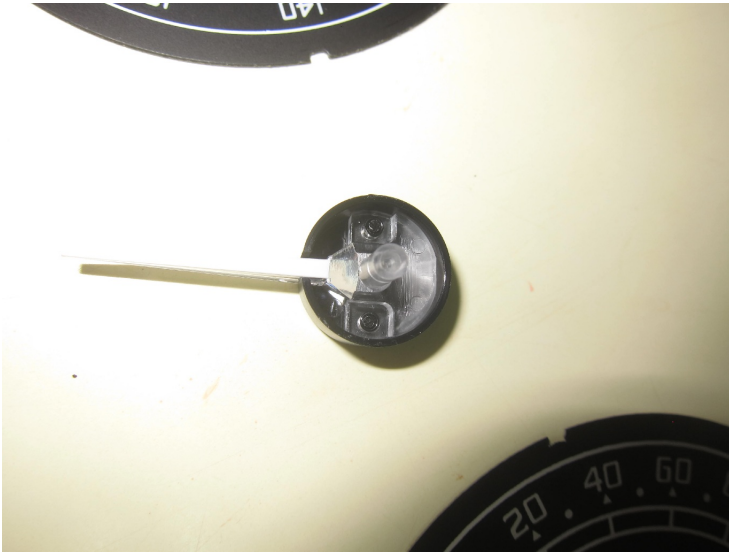


Figure 4.



Figure 5.

5. To install the clear lense, I first lightly sanded the black base with 600 wet sandpaper, (figure 6) Then I put a light coat of clear silicone along the outside lip of the clear lense (Figure 7) (A). I did not put any silicone on the part of the lense that slides inside the black base (Figure 7) (B) as I feel it is not necessary and if you need to remove it again it would be easy to cut through the silicone along the outer edge. You only need to snap the Bessel on the Speedo and you are done. You may have noticed I marked , with tape and pen, the location of the base, lense and Bessel before I disassembled the speedo.

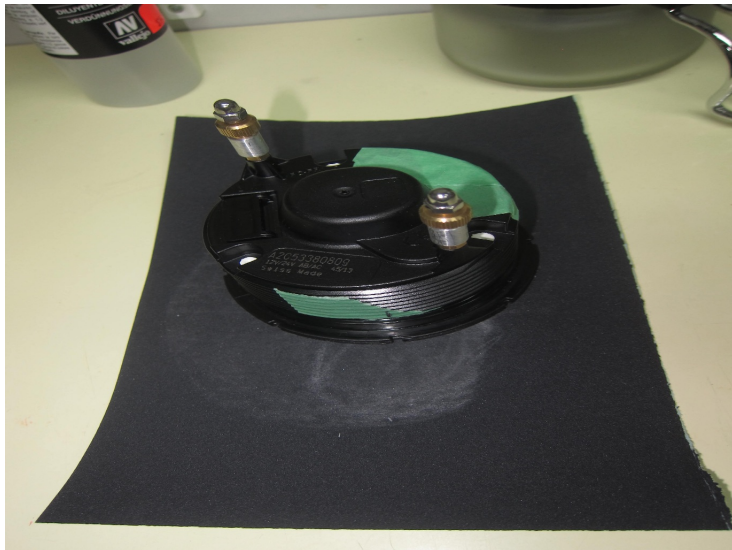


Figure 6.

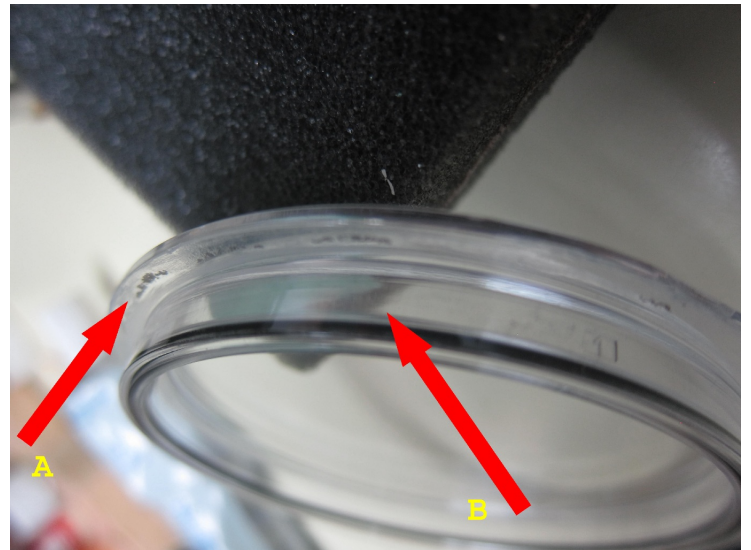


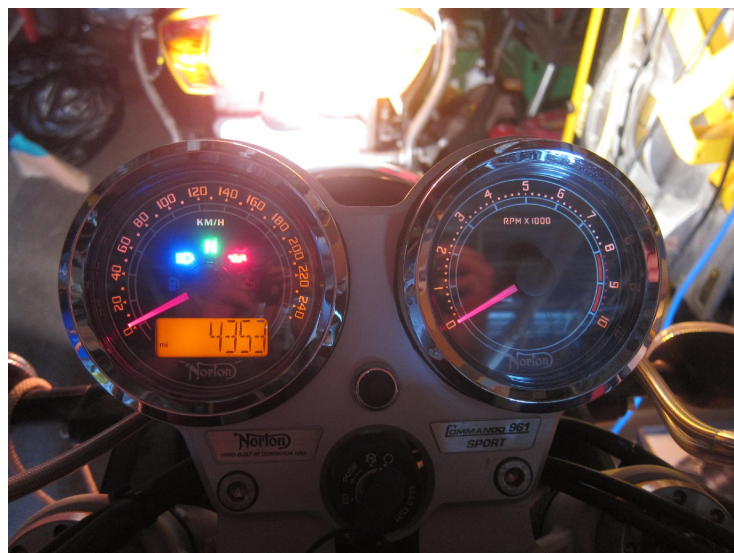
Figure 7.

### Conclusion.

It is not difficult to re-install your speedo arm if need be. If anyone is interested in replacing the dial face to metric, I have the instructions to do that. The dial face comes from Lockwoodinternational and the part number is C944. It will cost you about C\$100 to your door. The web site is:

[www.lockwoodinternational.co.uk/dials/kmh/norton/commando/commando-961-part-no-c944.html](http://www.lockwoodinternational.co.uk/dials/kmh/norton/commando/commando-961-part-no-c944.html)





I ride by the Tach however, I like the look of the metric dial and if I need to see my speed I can! I also think it looks better with the Tach dial face then the original. In the night picture the indicator lights look blurred, they are not, just bright to the camera.