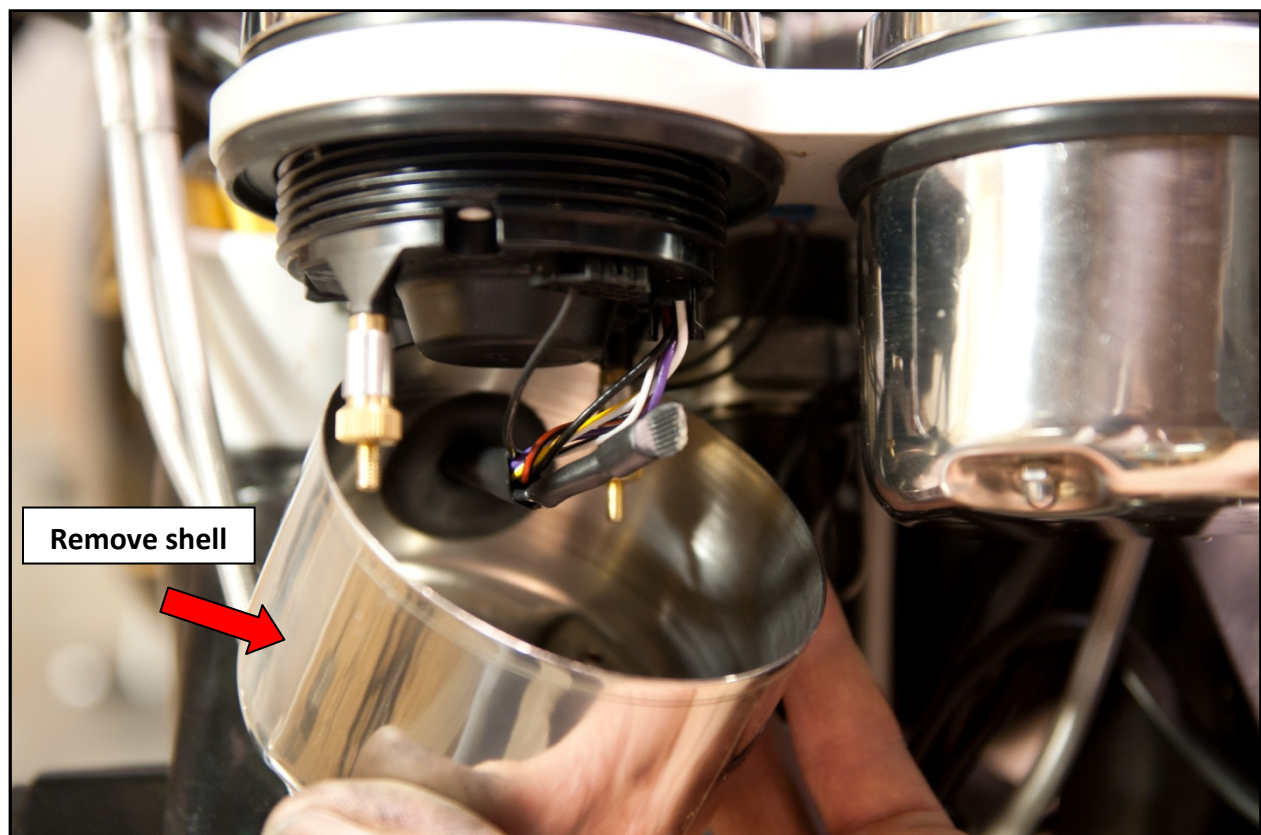
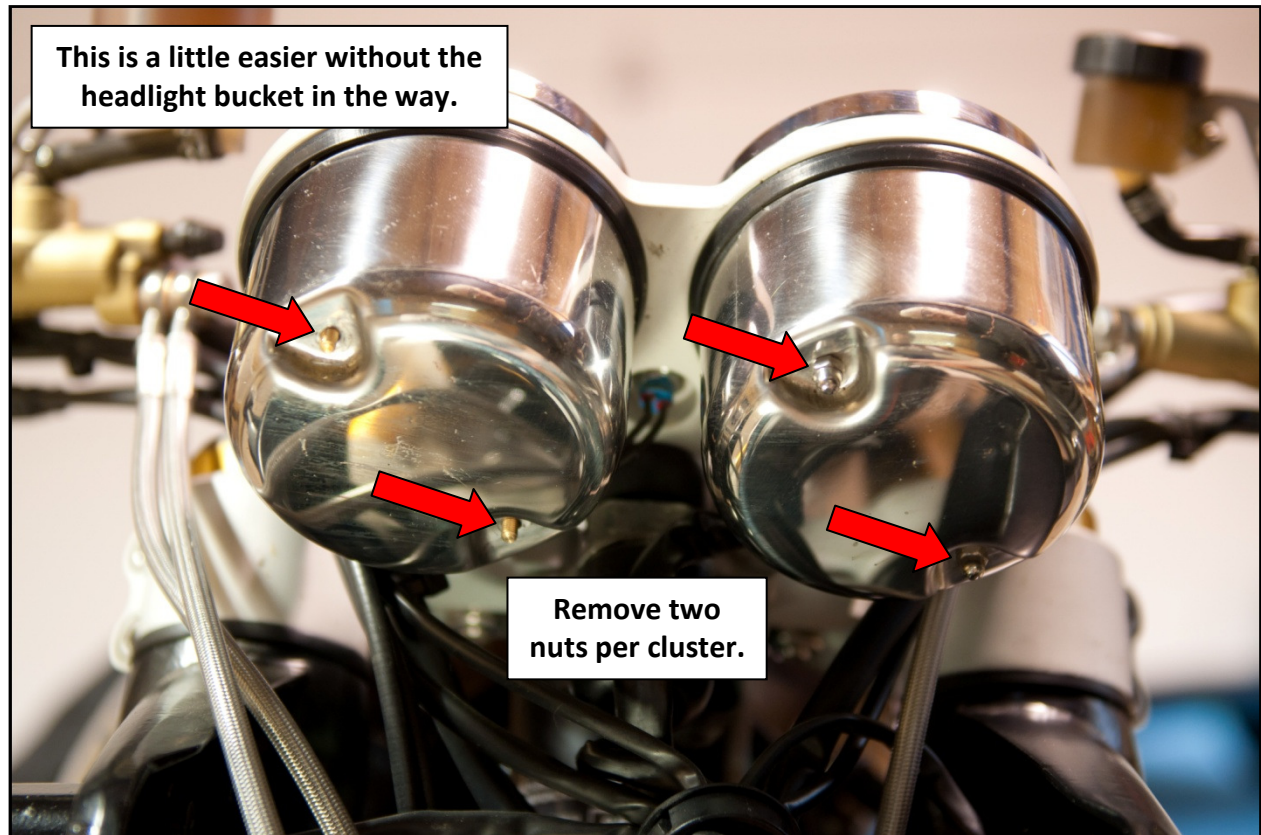




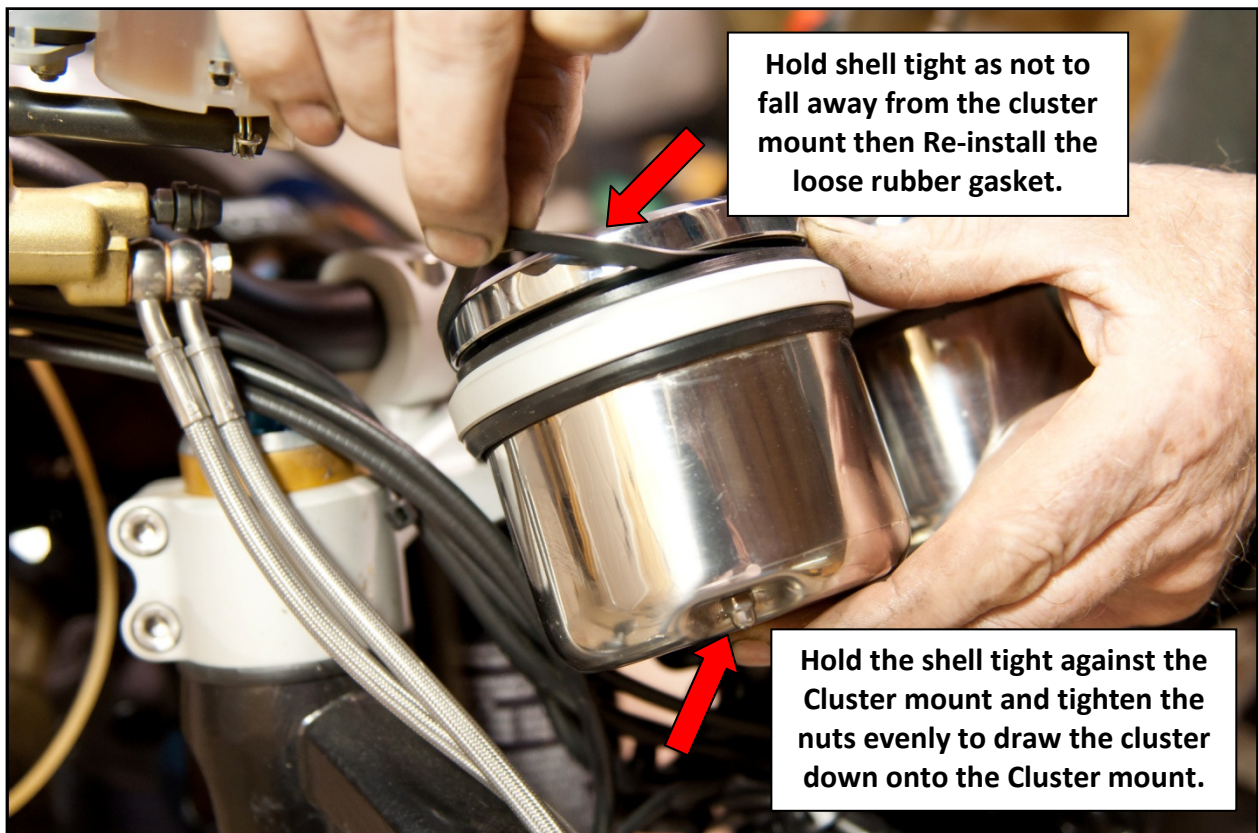
This section shows how to Remove and Re-install your cluster











CHANGING TIME DISPLAY FROM 24hr to 12hr
(This info is courtesy of Bill Linkletter)

The procedure to access the menu is as such:

- 1/ Press and **hold** the black selector button while turning the ignition on. The display will show UNIT, **release** the selector button.
- 2/ When UNIT is displayed, press and **hold** the selector button, when the factory setting option (24hr) is flashing, **release** the selector button.
- 4/ To change the value simply press the selector button **briefly** and **release**, the next value (12hr) will be flashing.
- 5/ To select the flashing value on the display screen, press and **hold** the selector button, the value will be excepted and the display screen will show the UNIT menu.
- 6/ Turn the Key OFF.



Although this guide doesn't have a price tag it is copyrighted and formally registered. If you like what you see and this has helped you, please make a donation via **PAYPAL** to **richard@coote1.com**. Your support will help make more manuals like this available. If you haven't helped yet please donate so I can continue to offer these guides.

If there are any tools in this manual you would like to purchase, please email me at **richard@coote1.com** for prices and availability. We are slowly developing useful tools to help make it easier for you to work on your pride and joy.



2013 Norton Commando SE #107 with Luggage ready to Leave for Texas from Niagara Falls.